

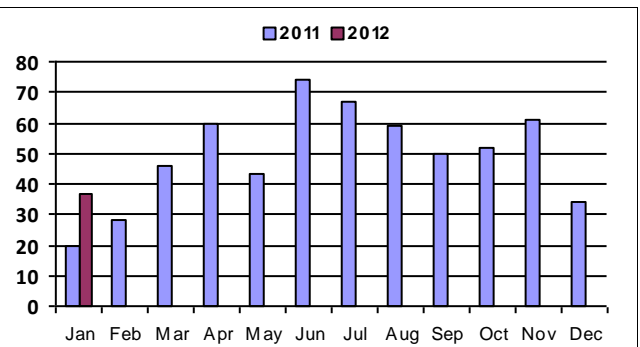
January 2012 - Real Estate Market Statistics



Jefferson County Central - JFC

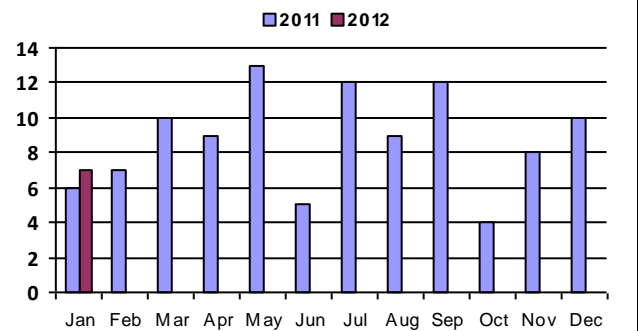
Closed Residential

Category	Jan-11	Jan-12	% Change
#Of Closed Sales - Month	20	37	85.0%
#Of Closed Sales - YTD	20	37	85.0%
Avg. Days On Market	89	120	34.8%
# Of Active Listings	276	153	-44.6%
# Of NEW Listings	67	67	0.0%
Absorption Rate (in months)	13.9	4.6	-66.4%
Average Price (Sold)	225,317	187,601	-16.7%



Closed Condo

Category	Jan-11	Jan-12	% Change
#Of Closed Sales - Month	6	7	16.7%
#Of Closed Sales - YTD	6	7	16.7%
Avg. Days On Market	90	145	61.1%
# Of Active Listings	59	32	-45.8%
# Of NEW Listings	15	17	13.3%
Absorption Rate (in months)	10.3	5.9	-43.3%
Average Price (Sold)	98,068	95,714	-2.4%



Land Title Guarantee Company

<http://www.ltgc.com>

Based on Information from Metrolist, Inc. for the period Jan 2009 through present. Note: This representation is based in whole or in part on data supplied by Metrolist, Inc. Metrolist, Inc. does not guarantee nor is in any way responsible for its accuracy. Data maintained by metrolist, Inc. may not reflect all real estate activity in the market.

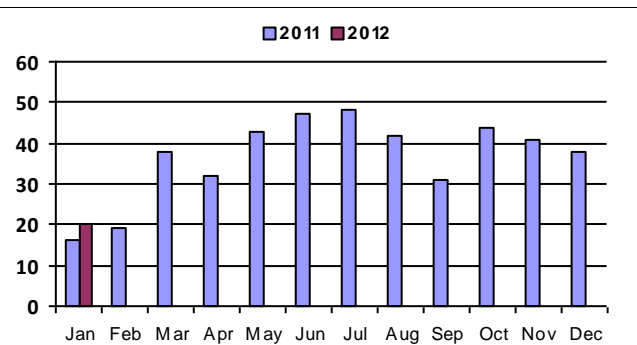
January 2012 - Real Estate Market Statistics



Jefferson County North - JFN

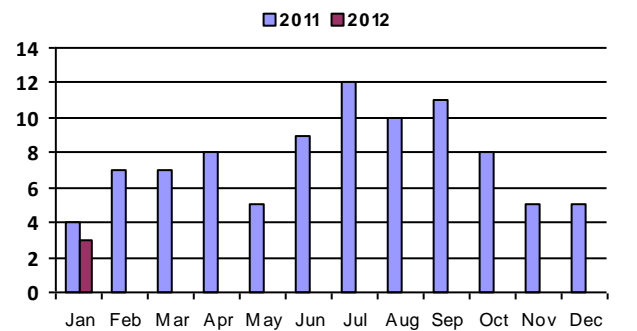
Closed Residential

Category	Jan-11	Jan-12	% Change
#Of Closed Sales - Month	16	20	25.0%
#Of Closed Sales - YTD	16	20	25.0%
Avg. Days On Market	94	50	-46.8%
# Of Active Listings	155	65	-58.1%
# Of NEW Listings	54	35	-35.2%
Absorption Rate (in months)	8.9	3.3	-63.4%
Average Price (Sold)	178,343	232,210	30.2%



Closed Condo

Category	Jan-11	Jan-12	% Change
#Of Closed Sales - Month	4	3	-25.0%
#Of Closed Sales - YTD	4	3	-25.0%
Avg. Days On Market	58	100	72.4%
# Of Active Listings	33	14	-57.6%
# Of NEW Listings	5	8	60.0%
Absorption Rate (in months)	9.5	6.	-36.8%
Average Price (Sold)	133,000	143,650	8.0%



Land Title Guarantee Company

<http://www.ltgc.com>

Based on Information from Metrolist, Inc. for the period Jan 2009 through present. Note: This representation is based in whole or in part on data supplied by Metrolist, Inc. Metrolist, Inc. does not guarantee nor is in any way responsible for its accuracy. Data maintained by metrolist, Inc. may not reflect all real estate activity in the market.

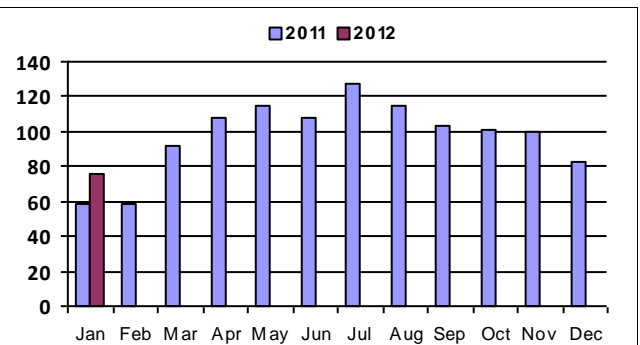
January 2012 - Real Estate Market Statistics



Jefferson County South - JFS

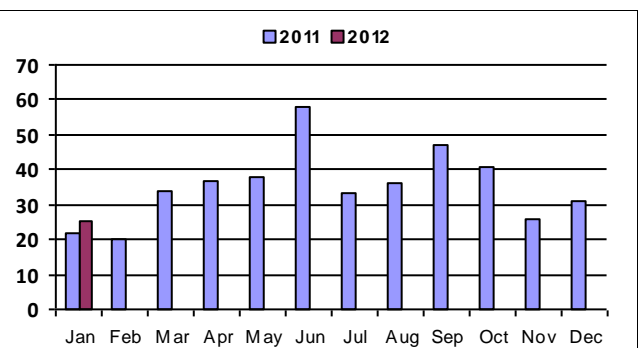
Closed Residential

Category	Jan-11	Jan-12	% Change
#Of Closed Sales - Month	59	76	28.8%
#Of Closed Sales - YTD	59	76	28.8%
Avg. Days On Market	121	123	1.7%
# Of Active Listings	456	311	-31.8%
# Of NEW Listings	152	145	-4.6%
Absorption Rate (in months)	7.8	4.2	-45.6%
Average Price (Sold)	289,520	292,176	0.9%



Closed Condo

Category	Jan-11	Jan-12	% Change
#Of Closed Sales - Month	22	25	13.6%
#Of Closed Sales - YTD	22	25	13.6%
Avg. Days On Market	104	97	-6.7%
# Of Active Listings	203	88	-56.7%
# Of NEW Listings	57	39	-31.6%
Absorption Rate (in months)	8.9	4.1	-54.0%
Average Price (Sold)	134,534	122,665	-8.8%



Land Title Guarantee Company

<http://www.ltgc.com>

Based on Information from Metrolist, Inc. for the period Jan 2009 through present. Note: This representation is based in whole or in part on data supplied by Metrolist, Inc. Metrolist, Inc. does not guarantee nor is in any way responsible for its accuracy. Data maintained by metrolist, Inc. may not reflect all real estate activity in the market.

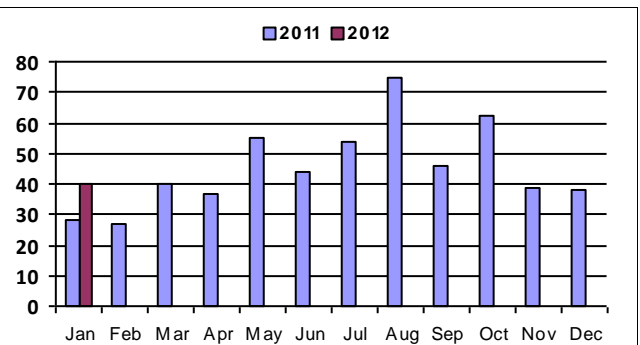
January 2012 - Real Estate Market Statistics



Jefferson County West - JFW

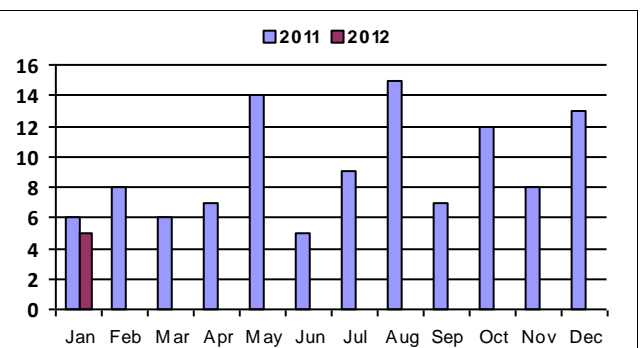
Closed Residential

Category	Jan-11	Jan-12	% Change
#Of Closed Sales - Month	28	40	42.9%
#Of Closed Sales - YTD	28	40	42.9%
Avg. Days On Market	173	97	-43.9%
# Of Active Listings	243	177	-27.2%
# Of NEW Listings	68	66	-2.9%
Absorption Rate (in months)	8.8	4.8	-45.4%
Average Price (Sold)	413,288	394,909	-4.4%



Closed Condo

Category	Jan-11	Jan-12	% Change
#Of Closed Sales - Month	6	5	-16.7%
#Of Closed Sales - YTD	6	5	-16.7%
Avg. Days On Market	93	90	-3.2%
# Of Active Listings	56	27	-51.8%
# Of NEW Listings	19	13	-31.6%
Absorption Rate (in months)	8.5	5.4	-36.5%
Average Price (Sold)	183,417	159,911	-12.8%



Land Title Guarantee Company

<http://www.ltgc.com>

Based on Information from Metrolist, Inc. for the period Jan 2009 through present. Note: This representation is based in whole or in part on data supplied by Metrolist, Inc. Metrolist, Inc. does not guarantee nor is in any way responsible for its accuracy. Data maintained by metrolist, Inc. may not reflect all real estate activity in the market.

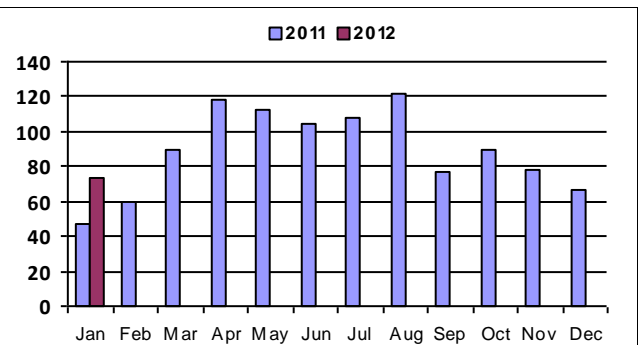
January 2012 - Real Estate Market Statistics



Jefferson County Northcentral - JNC

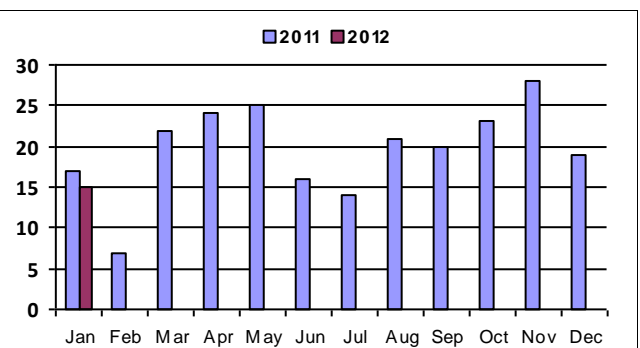
Closed Residential

Category	Jan-11	Jan-12	% Change
#Of Closed Sales - Month	47	74	57.4%
#Of Closed Sales - YTD	47	74	57.4%
Avg. Days On Market	103	97	-5.8%
# Of Active Listings	406	252	-37.9%
# Of NEW Listings	121	123	1.7%
Absorption Rate (in months)	9.1	3.5	-61.8%
Average Price (Sold)	207,121	244,566	18.1%



Closed Condo

Category	Jan-11	Jan-12	% Change
#Of Closed Sales - Month	17	15	-11.8%
#Of Closed Sales - YTD	17	15	-11.8%
Avg. Days On Market	118	100	-15.3%
# Of Active Listings	96	62	-35.4%
# Of NEW Listings	41	30	-26.8%
Absorption Rate (in months)	5.5	3.3	-39.1%
Average Price (Sold)	111,718	150,231	34.5%



Land Title Guarantee Company

<http://www.ltgc.com>

Based on Information from Metrolist, Inc. for the period Jan 2009 through present. Note: This representation is based in whole or in part on data supplied by Metrolist, Inc. Metrolist, Inc. does not guarantee nor is in any way responsible for its accuracy. Data maintained by metrolist, Inc. may not reflect all real estate activity in the market.

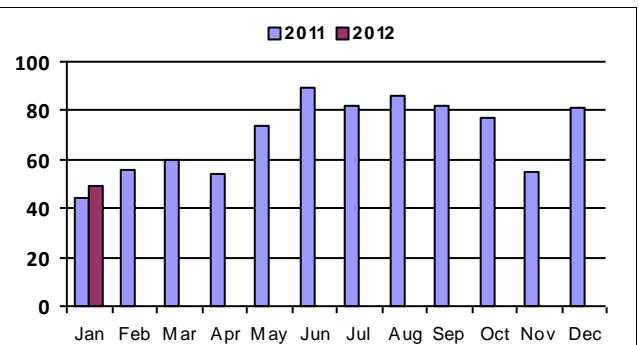
January 2012 - Real Estate Market Statistics



Jefferson County Southcentral - JSC

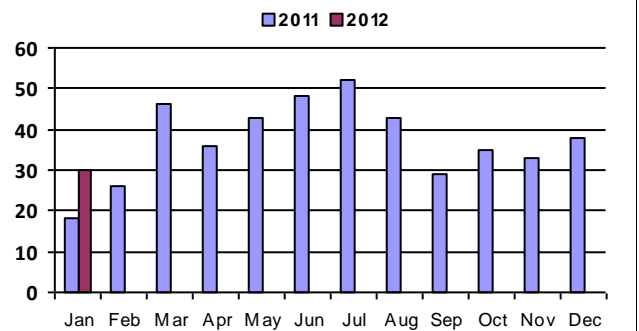
Closed Residential

Category	Jan-11	Jan-12	% Change
#Of Closed Sales - Month	44	49	11.4%
#Of Closed Sales - YTD	44	49	11.4%
Avg. Days On Market	100	128	28.0%
# Of Active Listings	323	203	-37.2%
# Of NEW Listings	111	103	-7.2%
Absorption Rate (in months)	7.4	4.4	-39.9%
Average Price (Sold)	234,487	221,150	-5.7%



Closed Condo

Category	Jan-11	Jan-12	% Change
#Of Closed Sales - Month	18	30	66.7%
#Of Closed Sales - YTD	18	30	66.7%
Avg. Days On Market	138	140	1.4%
# Of Active Listings	242	86	-64.5%
# Of NEW Listings	66	48	-27.3%
Absorption Rate (in months)	13.8	3.1	-77.5%
Average Price (Sold)	124,189	122,606	-1.3%



Land Title Guarantee Company

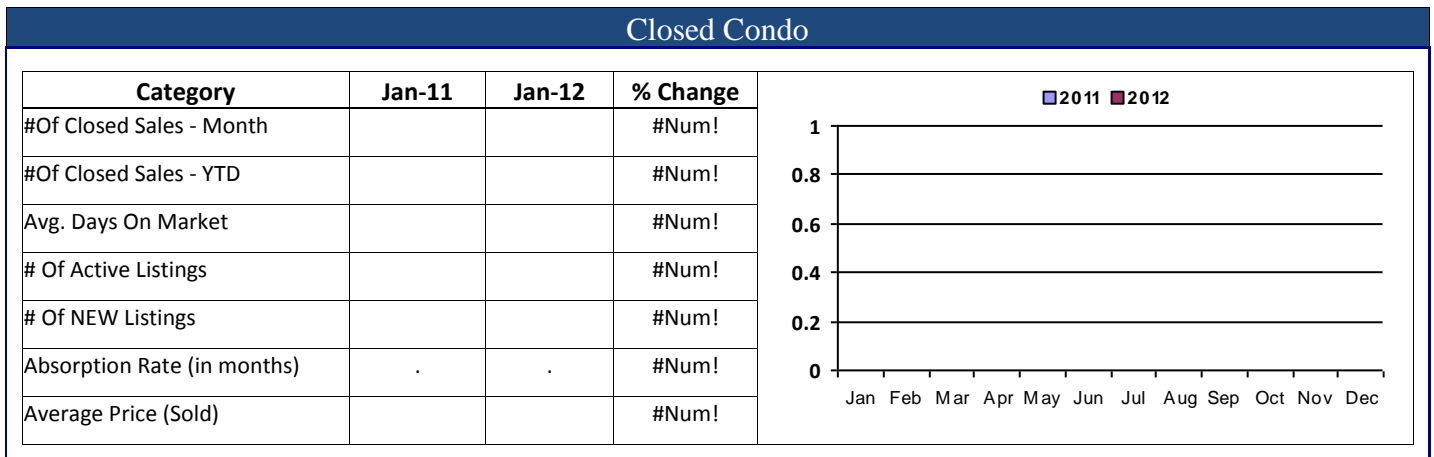
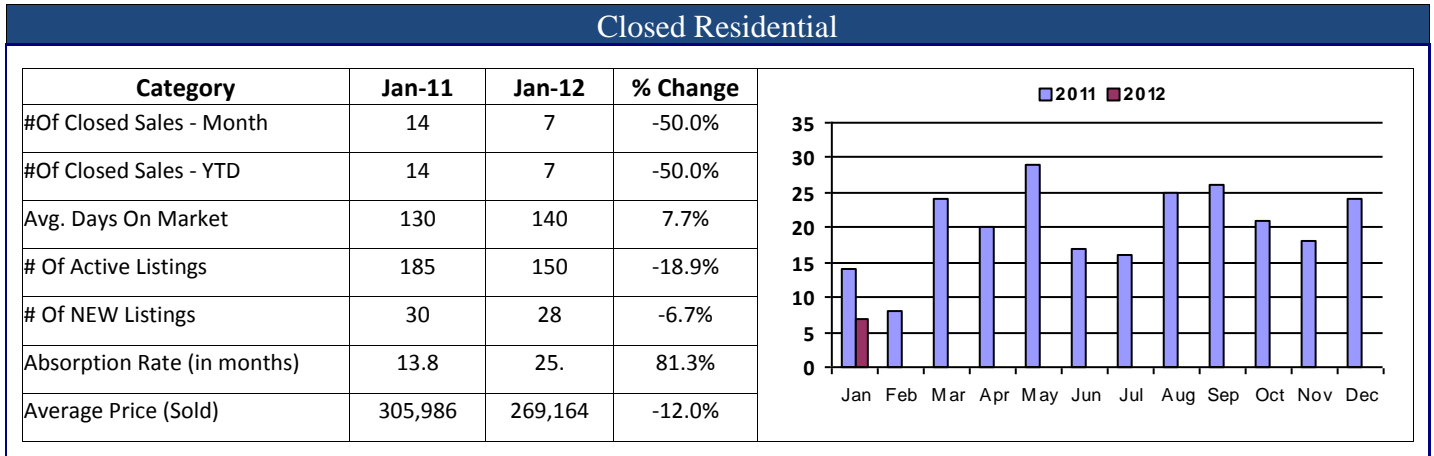
<http://www.ltgc.com>

Based on Information from Metrolist, Inc. for the period Jan 2009 through present. Note: This representation is based in whole or in part on data supplied by Metrolist, Inc. Metrolist, Inc. does not guarantee nor is in any way responsible for its accuracy. Data maintained by metrolist, Inc. may not reflect all real estate activity in the market.

January 2012 - Real Estate Market Statistics



Mountain Conifer Pine - MCP



Land Title Guarantee Company

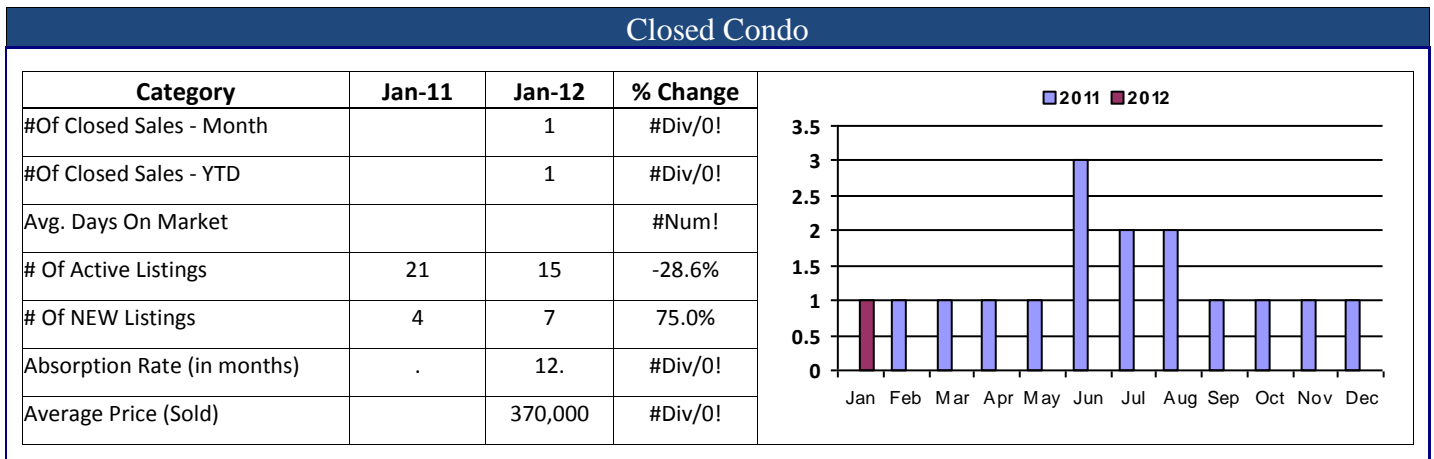
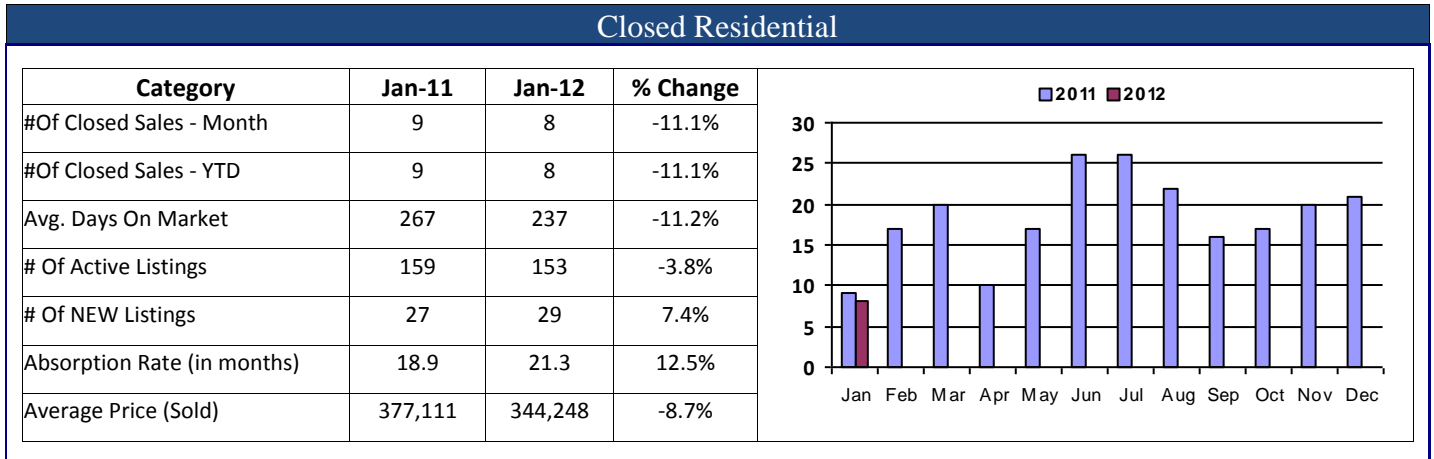
<http://www.ltgc.com>

Based on Information from Metrolist, Inc. for the period Jan 2009 through present. Note: This representation is based in whole or in part on data supplied by Metrolist, Inc. Metrolist, Inc. does not guarantee nor is in any way responsible for its accuracy. Data maintained by metrolist, Inc. may not reflect all real estate activity in the market.

January 2012 - Real Estate Market Statistics



Mountain Evergreen North - MEN



Land Title Guarantee Company

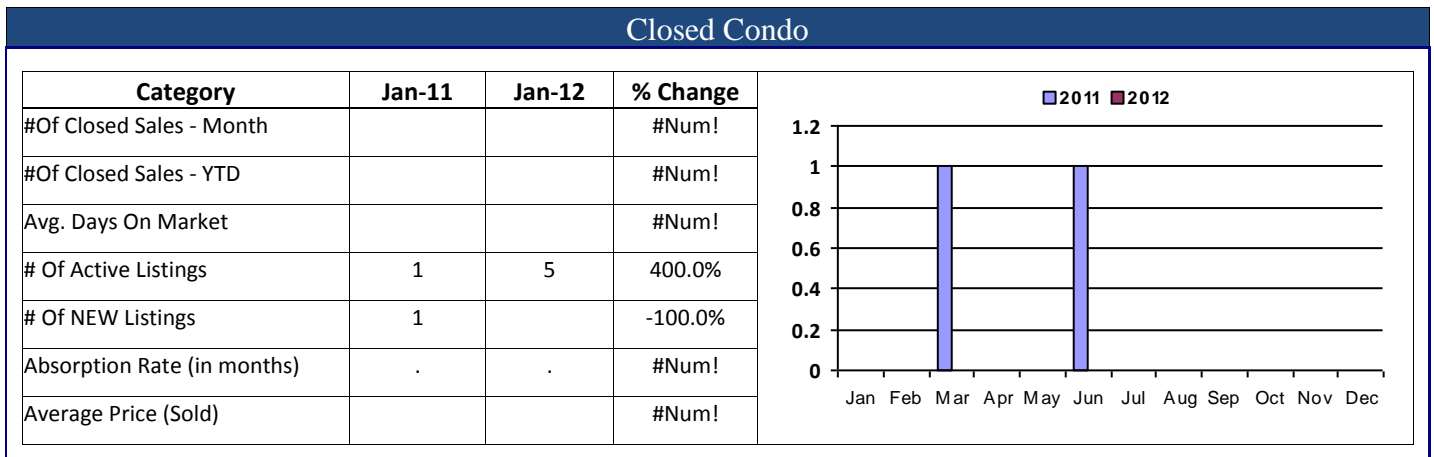
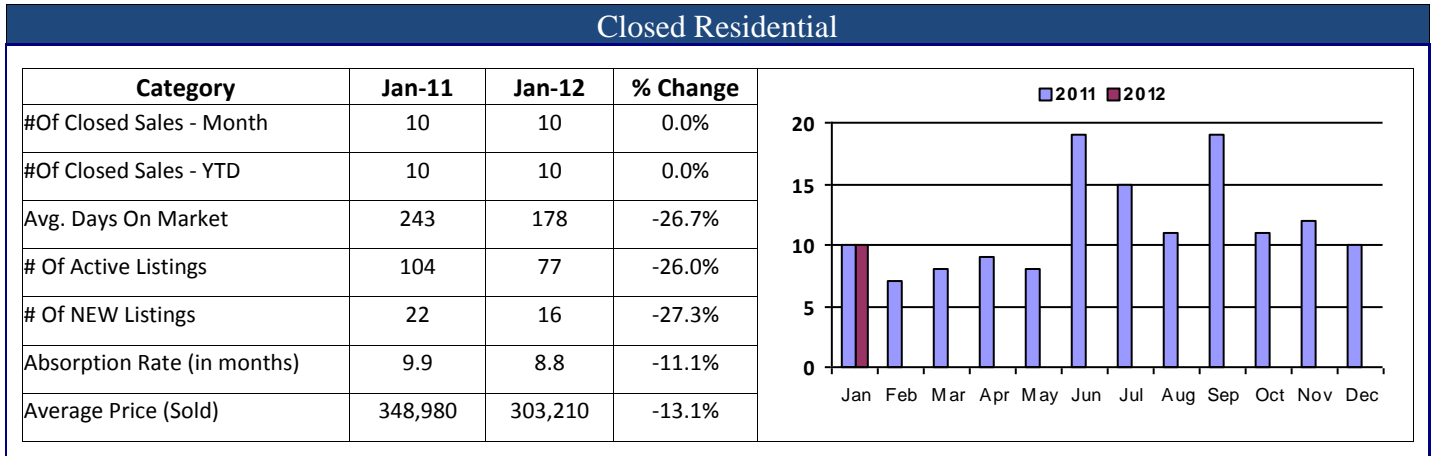
<http://www.ltgc.com>

Based on Information from Metrolist, Inc. for the period Jan 2009 through present. Note: This representation is based in whole or in part on data supplied by Metrolist, Inc. Metrolist, Inc. does not guarantee nor is in any way responsible for its accuracy. Data maintained by metrolist, Inc. may not reflect all real estate activity in the market.

January 2012 - Real Estate Market Statistics



Mountain Evergreen South - MES



Land Title Guarantee Company

<http://www.ltgc.com>

Based on Information from Metrolist, Inc. for the period Jan 2009 through present. Note: This representation is based in whole or in part on data supplied by Metrolist, Inc. Metrolist, Inc. does not guarantee nor is in any way responsible for its accuracy. Data maintained by metrolist, Inc. may not reflect all real estate activity in the market.

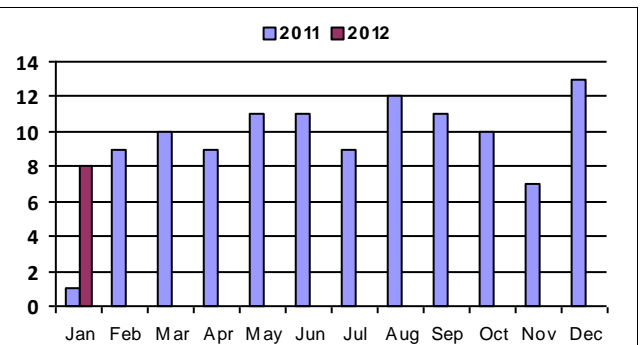
January 2012 - Real Estate Market Statistics



Mountain Jefferson County - MJC

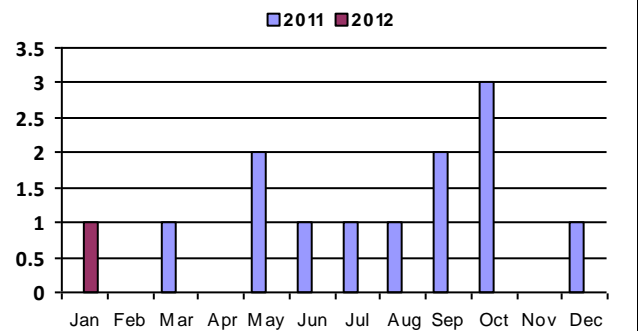
Closed Residential

Category	Jan-11	Jan-12	% Change
#Of Closed Sales - Month	1	8	700.0%
#Of Closed Sales - YTD	1	8	700.0%
Avg. Days On Market	595	240	-59.7%
# Of Active Listings	85	68	-20.0%
# Of NEW Listings	12	16	33.3%
Absorption Rate (in months)	93.	8.6	-90.7%
Average Price (Sold)	395,000	464,625	17.6%



Closed Condo

Category	Jan-11	Jan-12	% Change
#Of Closed Sales - Month		1	#Div/0!
#Of Closed Sales - YTD		1	#Div/0!
Avg. Days On Market		52	#Div/0!
# Of Active Listings	9	5	-44.4%
# Of NEW Listings	4	2	-50.0%
Absorption Rate (in months)	.	5.	#Div/0!
Average Price (Sold)		174,900	#Div/0!



Land Title Guarantee Company

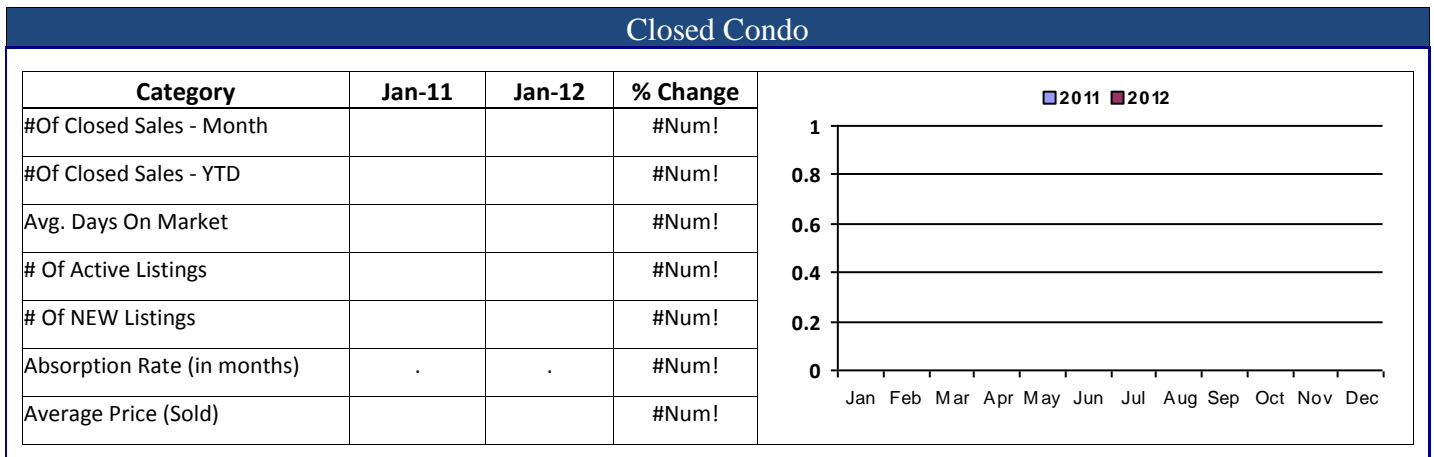
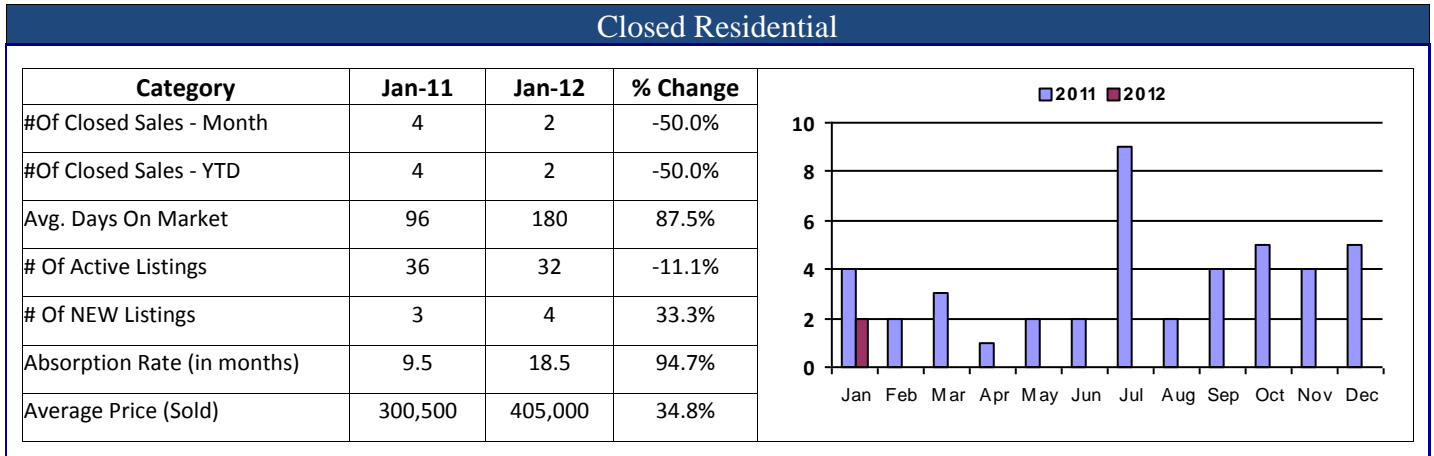
<http://www.ltgc.com>

Based on Information from Metrolist, Inc. for the period Jan 2009 through present. Note: This representation is based in whole or in part on data supplied by Metrolist, Inc. Metrolist, Inc. does not guarantee nor is in any way responsible for its accuracy. Data maintained by metrolist, Inc. may not reflect all real estate activity in the market.

January 2012 - Real Estate Market Statistics



Mountain Jefferson North - MJN



Land Title Guarantee Company

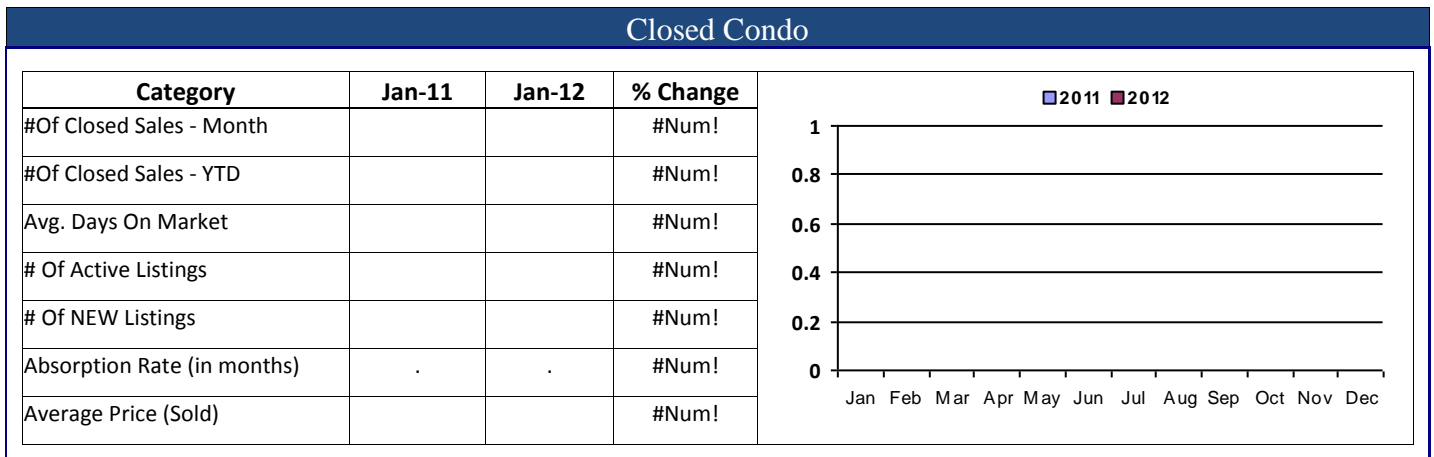
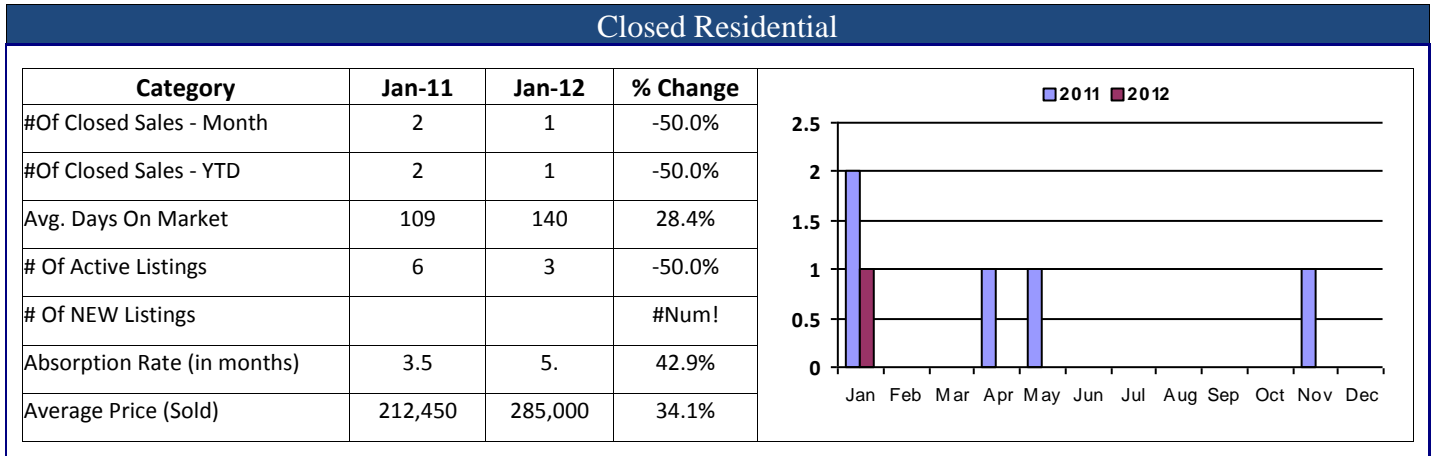
<http://www.ltgc.com>

Based on Information from Metrolist, Inc. for the period Jan 2009 through present. Note: This representation is based in whole or in part on data supplied by Metrolist, Inc. Metrolist, Inc. does not guarantee nor is in any way responsible for its accuracy. Data maintained by metrolist, Inc. may not reflect all real estate activity in the market.

January 2012 - Real Estate Market Statistics



Mountain Jefferson South - MJS



Land Title Guarantee Company

<http://www.ltgc.com>

Based on Information from Metrolist, Inc. for the period Jan 2009 through present. Note: This representation is based in whole or in part on data supplied by Metrolist, Inc. Metrolist, Inc. does not guarantee nor is in any way responsible for its accuracy. Data maintained by metrolist, Inc. may not reflect all real estate activity in the market.